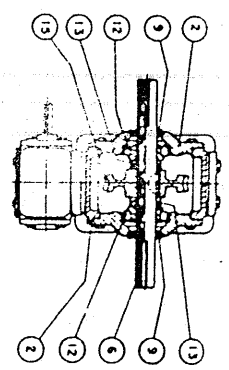
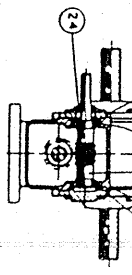


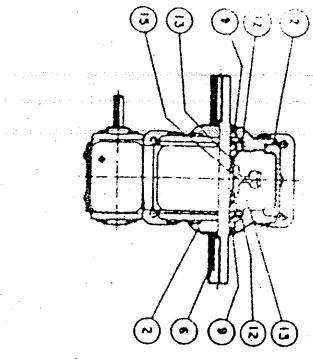
PARTS PRICE LIST FOR DOLLE REDUCTION MODELS —
 CBD — CTD — CVD — MCTD — MCVD — CBX — CTX — CVX



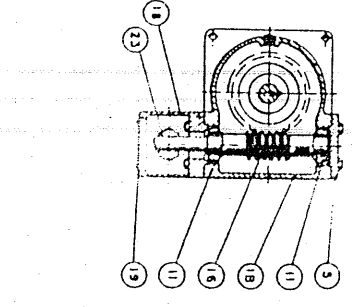
"CBD"



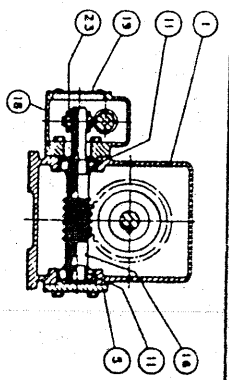
"CTD"



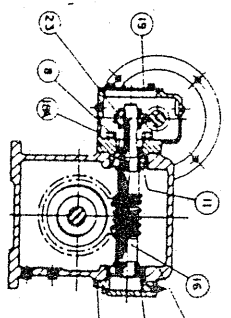
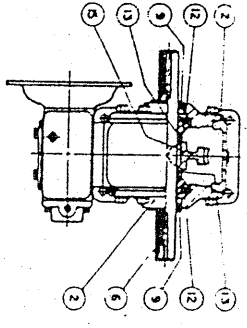
"CVD"



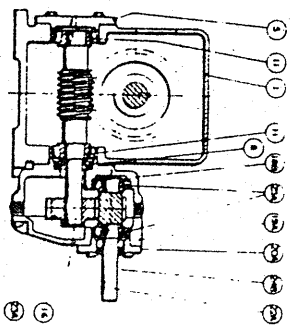
"MCVD"



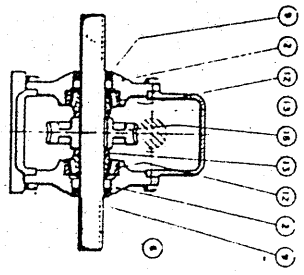
"MCTD"



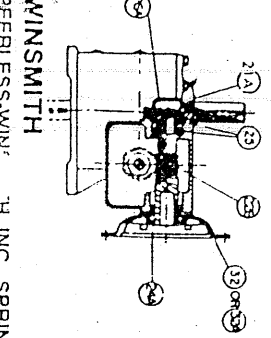
"CBX"



"CTX"



"CVX"



WINSMITH
 PEERLESS-WIN
 H, INC., SPRINGVILLE, N.Y. 14141-0129 • PHONE: 716-592-9311 • FAX: 716-592-

PARTS LIST FOR CBD-CTD-CVD-MCTD-MCVD-CBX-CTX-CVX

Eff. 11/1/89

Page 1 of 2

PLEASE CHECK REFERENCE NUMBER ON REQUIRED REDUCER DIAGRAM TO HELP DETERMINE CORRECT SELECTION OF PARTS.

Unit Code	Size: Description	2 Part #	3 Part #	4 Part #	5 Part #	6 Part #	7 Part #	8 Part #	9 Part #	10 Part #	11 Part #	12 Part #	13 Part #	14 Part #	15 Part #
1	Housing	4481	4601	4641	4721	4801	4881	4950	5010	5083	5041	5135	5180	5220	7335
1A	Housing	4521	4561	4690	4771	4841	4921	4970	5020	5091	5061	5150	5200	5240	7330
1B	Housing	4540	4580	4700	4781	4825	4940	4960	5030	5100	5071	5160	5210	5250	6900
2	S.S. Cover Open	4482	4605	4642	4722	4802	4883	4951	5002	5084	5042	5137	5182	5222	6904
2A	S.S. Cover Open	4445	4449	4451	4453	4455	4457	4459	394208	5084	5042	5137	5182	5222	6904
3*	S.S. Cover Closed	4483	4606	4643	4723	4803	4882	4952	5003	5085	5043	5136	5181	5221	6905
3A*	S.S. Cover Closed	4447	4450	4452	4454	4456	4458	4460	394209	5085	5043	5136	5181	5221	6905
5	Inter. Cover Closed	4485	4485	4645	4725	4954	4954	4954	5011	5045	5045	5138	5138	5224	6902
5A	Inter. Cover Closed	4522	4522	4691	4772	4949	4949	4949	4977	5238	5238	5218	5218	5235	7333
5B*	Inter. Adapter	--	--	--	--	--	--	--	--	5046	5046	5143	5143	5225	6903
6	S. S. Shaft Double	4493	4607	4647	4732	4807	4886	4955	5006	5088	5049	5140	5183	5227	7331
6A	S.S. Shaft Top	4541	4581	4701	4782	4828	4942	4956	5009	5086	5075	5144	5186	5229	6908
7*	S.S. Shaft Single	4492	4608	4646	4733	4806	4887	4956	5007	5089	5050	5141	5184	5226	7332
7A	S.S. Shaft Bottom	4542	4582	4702	4783	4827	4941	4978	5018	5087	5076	5145	5187	5230	6909
8	Inter. Oil Seal	3302	3302	3303	163	3304	3304	4959	663	3305	3305	3306	3306	3308	3309
9	S.S. Oil Seal	3303	163	3304	3305	3306	3308	3308	3309	3313	664	3310	213	511	533
11#	Int. Tapered Roller Cone Cup	3370 3371	3370 3371	4651 4652	4649 4650	4813 4814	4813 4814	4967 4968	2928 2929	5081 5082	5081 5082	5157 5156	5157 5156	5267 5268	5094
12	Ball Bearing S.S. Tapered Roller Brgs: Cone Cup	-- 741 740	-- 189 190	-- 4649 4650	-- 4730 4731	-- 2889 2888	-- 4889 4890	-- 4889 4890	-- 2936 2937	-- 5095 5094	-- 5078 5094	-- 3396 3397	-- 248 247	-- 5265 5266	-- 3374 3363
13	S.S. Spacer Short	--	4609	4648	4728	4808	4888	4957	5008	5090	5051	5142	5185	5228	6906
14	S.S. Spacer Long	4543	4583	4704	4784	4826	2734	4957	5001	5093	5077	5146	5188	5231	6907
15	S.S. Worm Gear Bronze	Per Ratio	Per Ratio	Per Ratio	Per Ratio	Per Ratio	Per Ratio	Per Ratio	Per Ratio	Per Ratio	Per Ratio	Per Ratio	Per Ratio	Per Ratio	Per Ratio
16	Inter. Worm Shaft Integ.	"	"	"	"	"	"	"	"	"	"	"	"	"	"
18	H.S. Attach. Housing	5500	5500	5501	5520	5522	5525	5530	5531	5535	5535	5540	5540	5545	3563
18A	H.S. Attach. Housing	1759	1759	1800	Per Assy	Per Assy	Per Assy	Per Assy	Per Assy	Per Assy	Per Assy	Per Assy	Per Assy	Per Assy	Per Assy
18B	H.S. Attach. Housing	--	--	--	5550	5551	5551	5551	5554	5557	5557	5560	5560	5561	--
19	H.S. Attach. Hsg. Cover	5510	5510	5510	5518	5518	5544	5544	5544	5548	5548	5549	5549	5546	95
19A**	H.S. Attach. Hsg. Cover	--	--	--	5555	5555	5555	5555	5555	5558	5558	5558	5558	5558	5562
20	H.S. Cap Open	4393	4393	4393	4523	4523	4692	4692	4692	4773	4773	4948	4948	4948	4979
20A	H.S. Cap Open	--	--	--	5556	5556	5556	5556	5556	5559	5559	5559	5559	5563	--

*Not Shown

**Included with 18B. Not sold separately.

#Reducer 2 thru 9, use 2 tapered roller bearings. Reducers 10 thru 15, use 2 tapered roller bearings & 1 ball bearing. When ordering parts, be sure to include unit size, ratio, serial number, and date of manufacture off of the gear reducer nameplate. For minimum order charge, see current general price list.

Prices shown are subject to appropriate multiplier from current Multiplier Schedule C.

PARTS4/49-50

PLEASE CHECK REFERENCE NUMBER ON REQUIRED REDUCER DIAGRAM TO HELP DETERMINE CORRECT SELECTION OF PARTS.

Size:		2	3	4	5	6	7	8	9	10	11	12	13	14	15
Code	Description	Part #	Part #	Part #	Part #	Part #	Part #	Part #	Part #	Part #	Part #	Part #	Part #	Part #	Part #
21	H.S. Cap Closed	4392	4392	4392	4522	4522	4691	4691	4691	4772	4772	4949	4949	4949	4977
21A	H.S. Cap Closed	1908	1908	1908	1761	1761	1780	1780	1780	1806	1806	1834	1834	1859	6891
22	H.S. Worm Shaft Integ.	Per Ratio	Per Ratio	Per Ratio	Per Ratio	Per Ratio	Per Ratio	Per Ratio	Per Ratio	Per Ratio	Per Ratio	Per Ratio	Per Ratio	Per Ratio	Per Ratio
22A	H.S. Pinion Integral	--	--	--	"	"	"	"	"	"	"	"	"	"	"
22B	H.S. Worm Shaft Integ.	Per Ratio	Per Ratio	Per Ratio	Per Ratio	Per Ratio	Per Ratio	Per Ratio	Per Ratio	Per Ratio	Per Ratio	Per Ratio	Per Ratio	Per Ratio	Per Ratio
23	H.S. Worm Gear/Brz.	Per Ratio	Per Ratio	Per Ratio	Per Ratio	Per Ratio	Per Ratio	Per Ratio	Per Ratio	Per Ratio	Per Ratio	Per Ratio	Per Ratio	Per Ratio	Per Ratio
23A	Int. Hel. Gear/Steel	--	--	--	"	"	"	"	"	"	"	"	"	"	"
24	H.S. Oil Seal	3301	3301	3301	3302	3302	3303	3303	3303	163	163	3304	3304	3304	663
24A	H.S. Oil Seal	4959	4959	4959	30060	30060	30060	30060	30060	1831	1831	1831	1831	1831	30064
24B	H.S. Oil Seal H.S. Tapered Roller Brg. Cone Cup	-- 3336 3337	-- 3336 3337	-- 3336 3337	3303 3370 3371	3303 3370 3371	3303 4651 4652	3303 4651 4652	3303 4651 4652	3304 4649 4650	3304 4649 4650	3304 4813 4814	3304 4813 4814	3304 4813 4814	-- 2923 2929
25A	H.S. Tapered Roller Brg. Cone Cup	-- --	-- --	-- --	741 740	741 740	741 740	741 740	741 740	5590 5591	5590 5591	5590 5591	5590 5591	5590 5591	-- --
26*	Inter. Locknut	--	--	--	--	--	--	--	--	238	238	305	305	160	311
26A	H.S. Locknut	158	158	158	1778	1778	176	176	176	210	210	210	210	210	224
26B*	H.S. Locknut CBX-CTX-CVX	--	--	--	--	--	--	--	--	238	238	305	305	160	--
28*	Inter. Locknut Spacer/except CVD or MCVD	--	--	--	--	--	--	--	--	5291	5291	5196	5196	5269	5292
32	Motor Adapter 4 1/2" AK	1907	1907	1907	33210	33210	1782	1782	1782	1807	1807	1839	1839	1839	6859
32A	Motor Adapter 8 1/2" AK	--	--	--	--	--	--	--	--	1808	1808	1841	1841	1841	6853
66*	Gasket Set	--	--	--	--	--	--	--	--	--	--	--	--	--	--

*Not shown.

**Included with 188. Not sold separately.

Reducer 2 thru 9, use two tapered roller bearings. Reducers 10 thru 15, use two tapered roller bearings and one ball bearing.

When ordering parts, be sure to include unit size, ratio, serial number, and date of manufacture off of the gear reducer nameplate.

For minimum order charge, see current general price list.

Prices shown are subject to appropriate multiplier from current Multiplier Schedule "C".

PARTS4/51